



# MED-SURG SMART BED BUYER'S GUIDE

**Choosing the right smart bed to  
transform your med-surg bed into  
a true extension of your care team**



## TODAY'S MED-SURG ENVIRONMENT

Med-surg units are constantly in a state of movement and change. The challenges your clinicians face today are complex and unique. And with aging beds in your hospital, there are several implications in holding onto your existing med-surg bed fleet – plus considerations for when you decide to replace those beds.

## THE CLINICIAN BURDEN

With many med-surg nurses managing 5-7 patients at a time<sup>1</sup>, such a high patient volume can overwhelm clinicians. With fewer clinicians to support more patients, this can potentially lead to increased fall risk, healthcare-associated infections, increased length of stay and higher rates of readmission.<sup>2</sup> Combine that with aging med-surg beds that do not include the newest technology and features, and your clinicians become even more burdened.







## THE REAL COST OF PATIENT SAFETY RISKS

When we take a look at patient falls, each year in the average 100-bed hospital, 179 patients will fall and 59 patients will be injured.<sup>3</sup> This can cost the facility \$1.3M or more per year.<sup>4</sup>

And approximately 2.5 million Americans develop pressure injuries in hospitals every year. With an average cost of \$10,708 per patient, pressure injuries are costly.<sup>5</sup>



## OUTDATED TECHNOLOGY

You can't teach old beds new tricks. Often, outdated technology can be the difference between proactive and reactive care delivery. New smart bed technology can transform your beds from something your patients lie on to a true extension of your care team.

# WHAT DOES A TRUE MED-SURG BED LOOK LIKE?

When it comes to delivering care in a med-surg unit, the one thing clinicians and patients need is support and that begins at the bedside. Your bed should have features that make it a true extension of your care team, not just a place for patients to lie.





# WHEN RESEARCHING YOUR OPTIONS, CONSIDER SMART BEDS WITH FEATURES THAT:

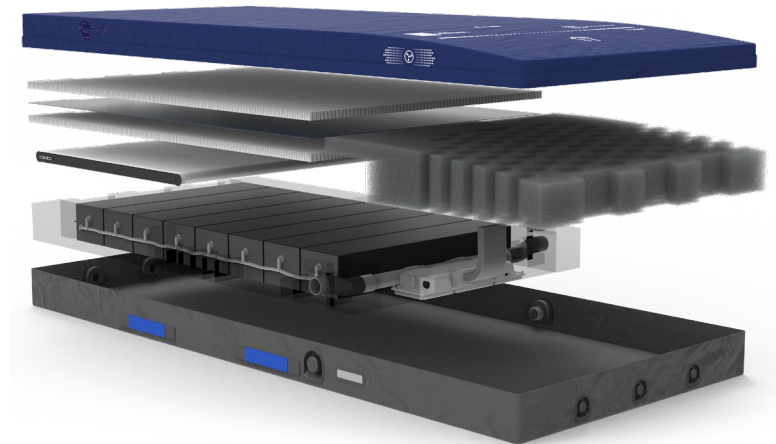
## PRIORITIZE PATIENT SAFETY

Patient deterioration, falls, and pressure injuries are not only costly but negatively affect the patient and clinician experience. When evaluating smart beds, consider:



## INNOVATIVE SURFACES TO SUPPORT SKIN SAFETY

Advanced surfaces can help protect patients' skin from the beginning – these surfaces should help manage pressure, shear, and moisture to deliver optimal wound healing and prevention.



## AUTOMATED FALLS PREVENTION PROTOCOLS

Smart beds should feature technology that elevates falls prevention protocols like – automated bed exit alarms, verbal and visual alerts, and lighted handrails.

## CONTACTLESS MONITORING TO GET AHEAD OF PATIENT DETERIORATION

Advanced bed sensor and alarm technology should go beyond minimal bed exit data. They should also enable care teams to monitor patient heart and respiratory rates without any wires. Going one step further, this technology should then alert clinicians when HR/RR exceeds one of the set thresholds.

# ELEVATE CLINICIAN SUPPORT

The med-surg environment is challenging – providing actionable patient alerts to clinicians even when they're not at the bedside can help clinical teams identify patient risks sooner and help accelerate intervention.



## HELP CLINICIANS INTERVENE SOONER

Technology shouldn't add to the chaos, it should help solve for it – newer smart beds collect and analyze patient data to deliver actionable alerts to clinicians so they can intervene sooner.

## INTUITIVE PATIENT ALERTS

Beds should be more than just a place for your patients to lie – they should come with smart features that make it easy to know when patients are safe and when they are at risk.



## SPEND LESS TIME CHARTING

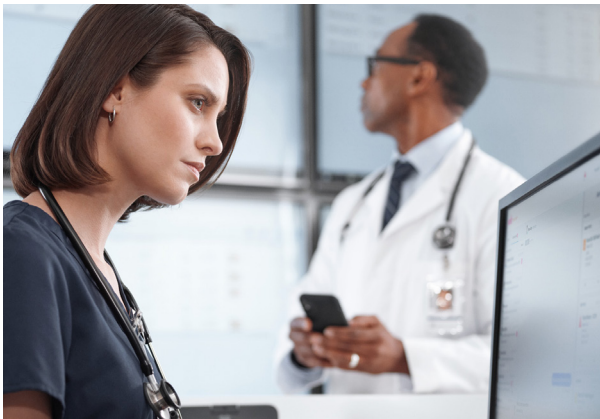
Consider options that can leverage data from your smart beds to help support the automation of documenting patient data to ensure accuracy.

# SUPPORT COMPREHENSIVE CONNECTIVITY

Providing actionable patient insights to clinicians at the point of care can help identify patients at risk of deterioration and accelerate intervention.

## CONNECTION WITHOUT THE CABLE

Newer beds go beyond the 37-pin connector cable and wirelessly connect to your hospital's wifi network to send nurse calls, room controls, bed alerts and other bed generated data to the nurse call system.



## COLLECT REAL-TIME PATIENT DATA

By collecting and analyzing patient data, caregivers can make informed decisions and care plans to keep patients safe.

## MULTIPLE WAYS TO VIEW ALERTS

It's important to relay critical information to care teams when they need it – now you can do it via dome lights, smartphones, and nurse and unit-level dashboards.



# MORE THAN JUST A BED

In today's complex and ever-changing med-surg environment, choosing the right smart beds that are future-proof, while featuring the newest technologies, is an important investment in your hospital's future. Our team is well versed in helping you select the right configurations, features, and surfaces for your med-surg beds that will support your clinicians for today and tomorrow. Reach out to your Baxter sales representative to discuss your med-surg needs.

## MEET THE NEWEST MEMBER OF YOUR CARE TEAM



**DIG DEEPER  
INTO HILLROM  
CENTRELLA  
SMART+ BED WITH  
READYCONNECT  
SYSTEM**

[Visit the webpage](#)



**VISIT OUR  
CUSTOMER  
EXPERIENCE  
CENTERS**

[Visit the webpage](#)



**Hillrom™**

Find out more on how you can elevate care delivery and transform your hospital bed into a true extension of your care team at [hillrom.com](http://hillrom.com)

**hillrom.com**

#### References

- <sup>1</sup> [http://lippincottolutions.lww.com/blog.entry.html/2014/09/03/the\\_three\\_bs\\_of\\_med--cEOD.html](http://lippincottolutions.lww.com/blog.entry.html/2014/09/03/the_three_bs_of_med--cEOD.html)
- <sup>2</sup> Litvak E, Fineberg H. Smoothing the way to high quality, safety and economy. N Engl J Med. 2013;369(17):1581-1853.
- <sup>3</sup> Preventing Falls TST © Joint Commission Center for Transforming Healthcare. [http://www.centerfortransforminghealthcare.org/assets/4/6/Falls\\_TST\\_PPT\\_Slides.pdf](http://www.centerfortransforminghealthcare.org/assets/4/6/Falls_TST_PPT_Slides.pdf). Accessed February 2016.
- <sup>4</sup> Hoffman, et al. Claims-based Identification Methods and the Cost of Fall-related Injuries Among US Older Adults. Medical Care. Volume 54, Number 7, July 2016.
- <sup>5</sup> <https://www.ncbi.nlm.nih.gov/pmc/articles/PMC7948545/#iwj13071-bib-0005>

Baxter reserves the right to make changes without notice in design, specifications and models. The only warranty Baxter makes is the express written warranty extended on the sale or rental of its products.

Baxter, Centrella, Hillrom and ReadyConnect are trademarks of Baxter International Inc. or its subsidiaries.  
US-CS3-230077 v1 06/23